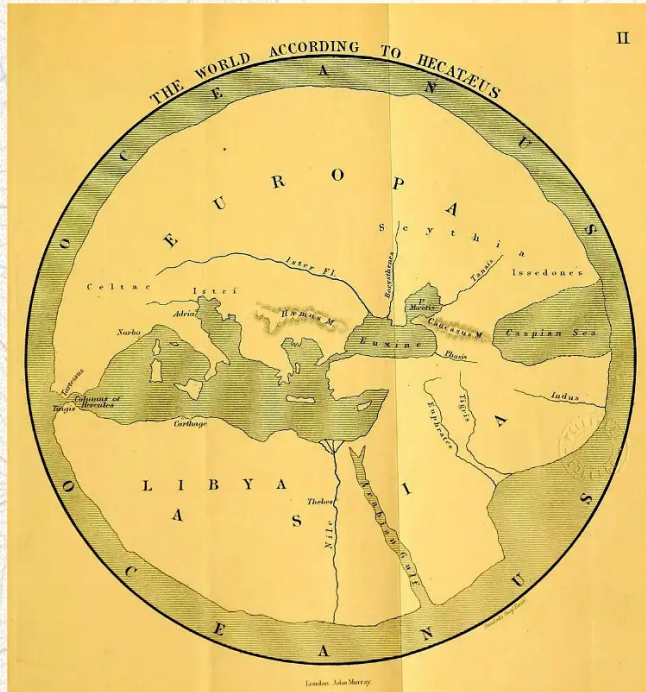


Topographical maps for all!

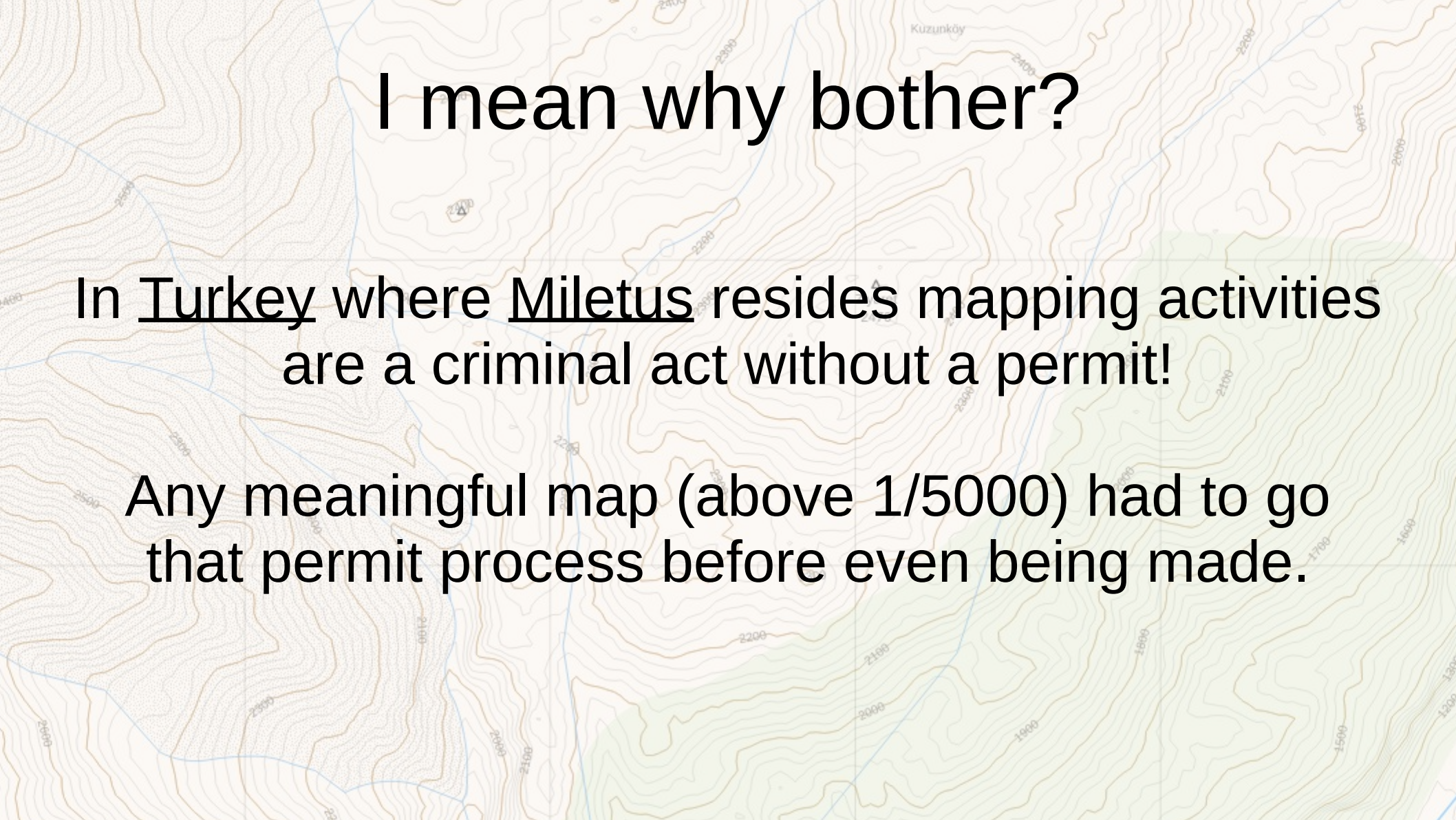


Anaximander of Miletus



WHY?

- Why not?
 - Maps are fun. (Cool and retro)
 - Maps are useful. (No batteries, wide, cheap)
 - Maps are shareable. (Like your old school books)

A topographic map showing contour lines and elevation. The map is light-colored with brown contour lines and blue lines representing water features. The text is overlaid on the map.

I mean why bother?

In Turkey where Miletus resides mapping activities are a criminal act without a permit!

Any meaningful map (above 1/5000) had to go that permit process before even being made.

A topographic map showing contour lines, a grid, and geographical features like 'Kuzunköy' and 'Ziyaret 2476'.

So you can buy them, can't you?

No.

Any navigationally useful map are either under military classification or stolen.

Anything else is useless.



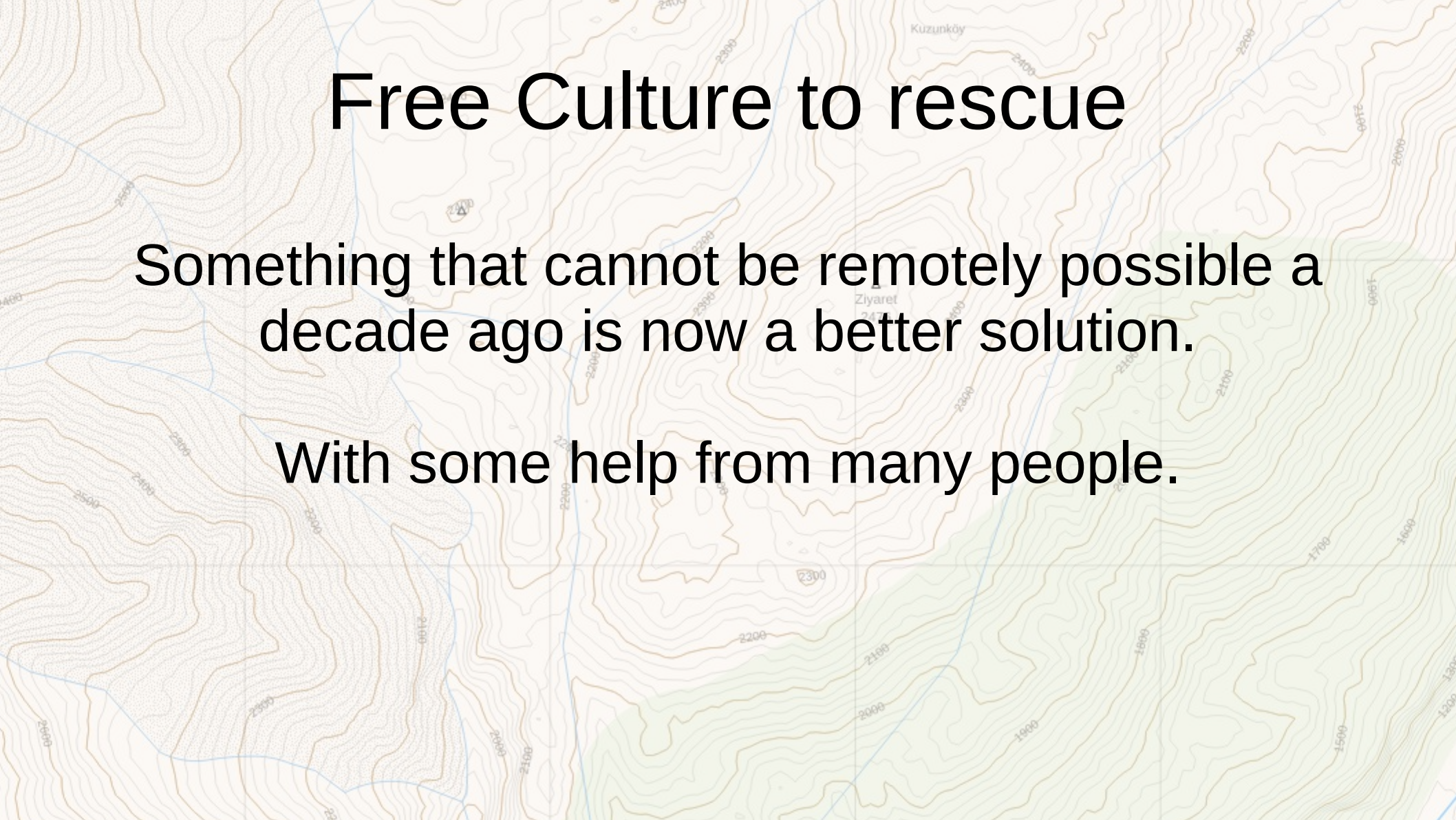
There is an app for that...

Most of them proprietary.

Electronics and outdoors are not friends.

Entropy is an enemy.

Turkish government is after them too.

A topographic map with brown contour lines and blue lines representing water features. The map shows a hilly area with various elevation points. Labels include 'Kuzunköy' at the top, 'Ziyaret' in the middle, and several numerical values like 2300, 2200, 2100, 2000, 1900, 1800, 1700, 1600, 1500, and 1400. There are also some small symbols and numbers scattered across the map.

Free Culture to rescue

Something that cannot be remotely possible a decade ago is now a better solution.

With some help from many people.

QGIS

- A free geographic information system software
- Written in Python with many plugins



OpenStreetMap



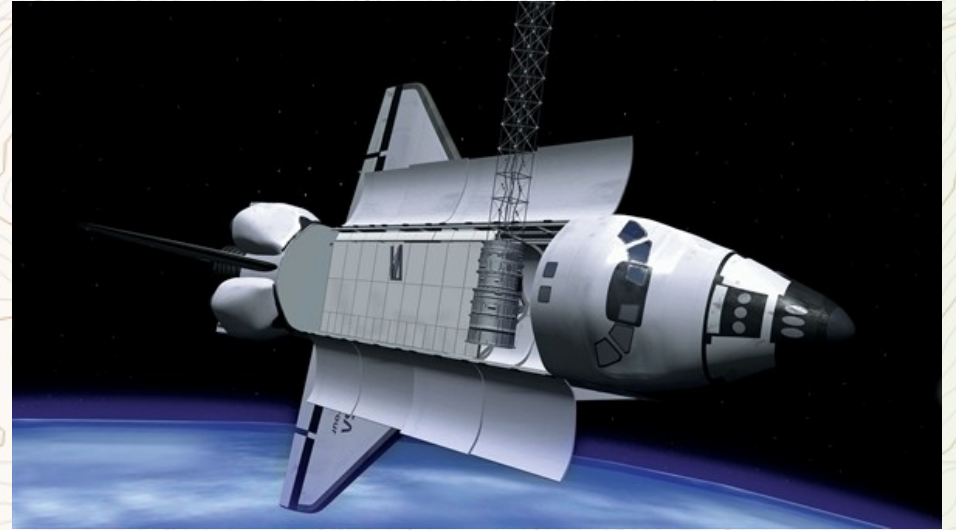
OpenStreetMap

- A free database of geographical information
- Maintained by volunteers around the world.

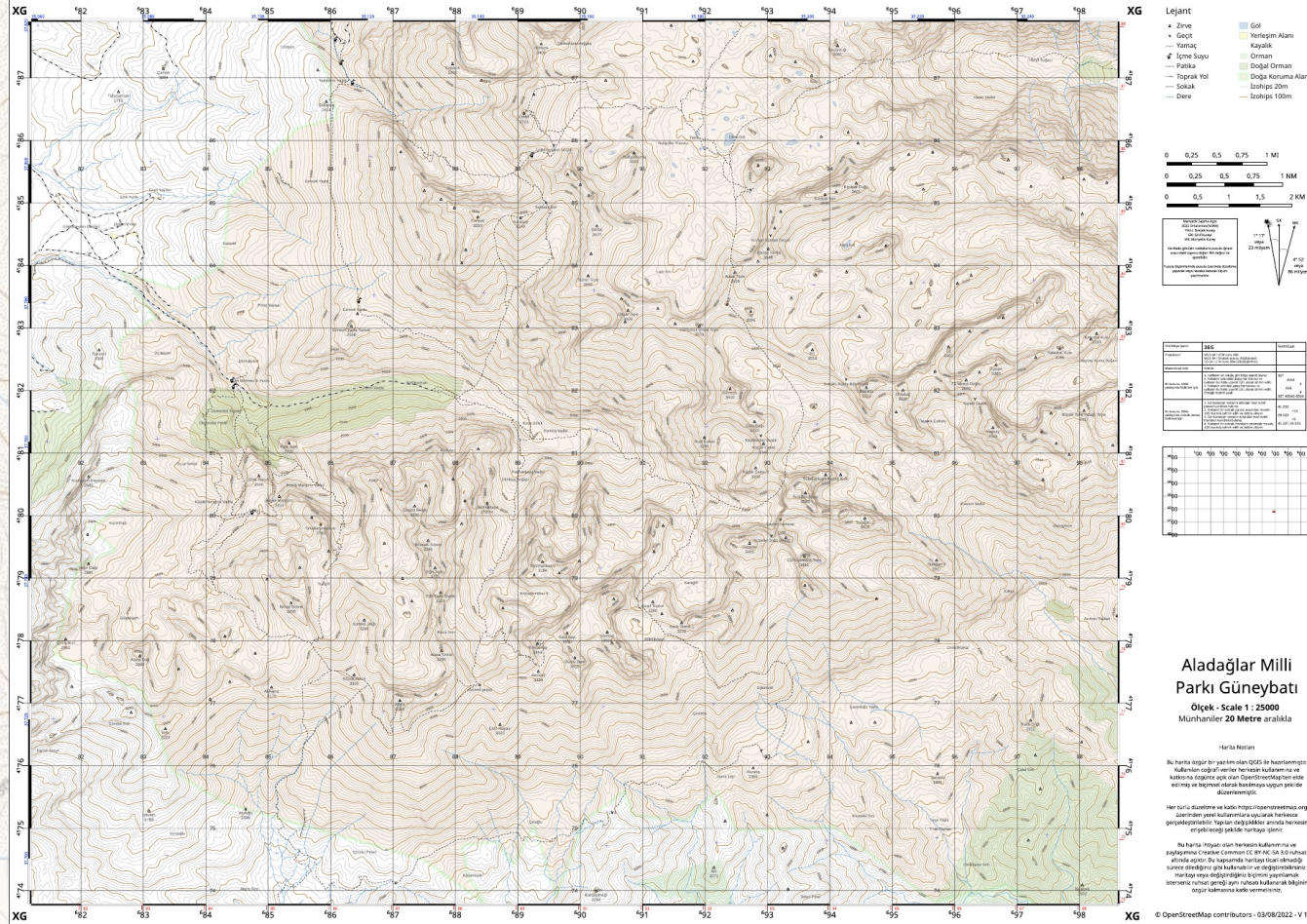


A relic from past

- The Shuttle Radar Topography Mission(SRTM)
- Near global elevation data in 30m resolution



To create this..



Aims...

- Correctly scaled
 - 1/25.000, 1/50.000, 1/100.000
- Topographically accurate
 - 10/50 meters or 20/100 meters
- Multiple relevant coordinate systems
 - WGS84/UTM WGS84 MGRS
- Navigationally usefull
 - OSM supplied usefull features such as paths, shelters, passages etc.
- Current
 - As updated as it can be depending on major changes of OSM data.

Contribute to OSM



- Over 1 milion building mapped in less then 72h
- Over 4000 volunteers
- 100.000 Building mapped as damaged

Lets make our own!

- Site stays behind TOR hidden service for security.
- Anybody wants to host this project or expand it to other places are welcome!

